

# ***Wide Selection*** ***for Diverse Applications from*** ***A&D***



**AND**  
...Clearly a Better Value  
<http://www.aandd.jp>

# Key Feature Index

	Super Hybrid Sensor		DDU
	VFD Display		Splash Proof
	LCD Backlight		IP54 (Protected against moisture and dust)
	LCD Display		IP65 (Protected against moisture and dust)
	Full Digital Calibration		NSF Compliant
	Internal Calibration		Battery Operation (AA)
	0.01 mg Semi-Micro Resolution		Battery Operation (D)
	Smart Range		Auto Power ON
	Triple Range Weighing		Auto Power OFF
	Three Weighing Resolution		Sealed Lead Acid Rechargeable Battery (6V, 4Ah)
	Animal Weighing		WinCT
	RS-232C		WinCT Moisture
	Current Loop (optional)		Comparator
	LAN		ACAI (Automatic Counting Accuracy Improvement)
	USB		ID Number
	GLP Compliance		Data Memory
	Universal Flex Coms		Time & Date
	Secondary Radiation Assist		Statistical Calculation Funktion
	Straight Halogen Lamp		Percent
	Underhook		Simplified Operation Mode
	Buzzer Function		Accumulation Funktion

# SV-10/SV-100

888  
VFD Display

RS-232C



## Viscometry Revolution! Sine-wave Vibro Viscometer

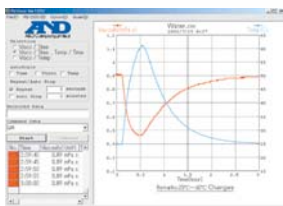
The SV measures viscosity by detecting the driving current necessary to resonate the two sensor plates at a constant frequency of 30 Hz and amplitude of less than 1mm.



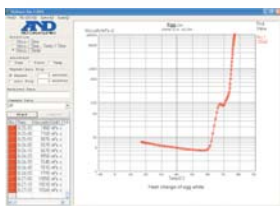
- Wide measurement range 0.3 – 10,000 mPa·s for SV-10, 1,000 – 100,000 mPa·s for SV-100
- Temperature measurement from 0 to 160 °C
- High measurement accuracy for repeatability of 1% for viscosity measurement
- Small sample size of 35ml and optional 10ml cup and 13ml glass cup
- Easy cleaning of sensor plates and temperature sensor
- WinCT-Viscosity for data collection to PC and graphical display
- Viscosity Calibration function by users
- Simplified calibration function with pure water (SV-10)
- Temperature control application with Water Jacket AX-SV-37
- Recognized by JCSS (Japan Calibration Service Systems) as standard vibration method

## WinCT-Viscosity

RsVisco software was developed for the transmission of real-time viscosity and temperature measurement results from the SV series to a PC. The results are displayed in a graph format with scaling conversion and logarithm display functions available. The user can save the measurement data as a "CSV" file and open it using RsVisco for future analysis of a sample.



Viscosity and Temperature display



Heat change of egg white or Log display

Model	Range	Measurement Unit
SV-10	0.3 – 10,000 mPa·s	mPa·s, Pa·s, cP, P
SV-100	1 – 100 Pa·s	Pa·s, P

# MS/MX/MF/ML

**SHS**  
Super Hybrid Sensor

**888**  
VFD display

**FDC**  
Full Digital Calibration

**RS-232C**

**GLP**

**SRA**  
Secondary Radiation Assist

**Straight Halogen Lamp**

**WinCT**  
MOISTURE

**ID**

**Memory**



**MS-70**



**MX-50**



**MF-50**



**ML-50**

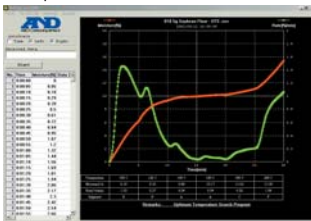
# Moisture Analyzers

- Fast and uniform heating with halogen lamp and innovative SRA (Secondary Radiation Assist) technology
- High repeatability with SHS (Super Hybrid Sensor) technology
- WinCT-Moisture (standard for MS&MX) displays optimum heating temperature (RsTemp) and real-time graphs (RsFig)
- Sodium Tartrate Dihydrate for accuracy verification
- Calibration function for heating temperature with AX-MX-43 (MS/MX only)
- Memory function
- Five measurement programs (Standard, Quick, Automatic, Timer and Manual Mode)
- Four heating modes for MS/MX/MF (Standard, Quick, Step and Ramp Heating Mode)
- Large easy-to-read VFD display
- Compact unit
- Low maintenance cost assured
- Progress window for heating check
- Self-check function
- Quick reference card
- RS-232C as standard
- Conforms with GLP, GMP, GCP and ISO
- ID, calibration data and check record output

## WinCT-Moisture *Measurement examples*

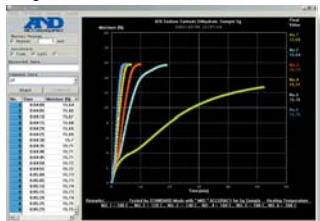
WinCT-Moisture consists of RsTemp software to determine optimum heating temperature and RsFig software for graphical display of moisture content.

RsTemp



*Soybean flour*

RsFig



*Sodium tartrate dihydrate*

Model	MS-70	MX-50	MF-50	ML-50	
Measurement Method	400W straight halogen lamp heating system with SRA filter and SHS weighing technology				
Max Sample Weight Capacity	71g	51g			
Weight Resolution	0.0001g	0.001g	0.002g	0.005g	
Moisture Content Display	0.001%/0.01%/0.1%	0.01%/0.1%	0.05%/0.1%/1%	0.1%/1%	
Moisture Content	over 1g	0.05%	0.10%	0.20%	0.5%
Accuracy	over 5g	0.01%	0.02%	0.05%	0.1%
Heating Technology	Halogen lamp (Straight type, 400 Watt max, 5000 hours)				
Drying Temperature	30 – 200 °C	50 – 200 °C			
Measurement Programs	Standard Mode / Automatic Complete Mode / Timer Mode / Manual Mode / Quick Mode				
Measurement Modes	Wet base / Dry base / Solid content / Ratio / Weight				
Display Type	Large VFD				
Sample Pan Size	Ø 85mm				



# ***GH Series / HR-i Series***

## *Semi-Micro / Analytical Balances*

**888**  
LCD Display

**FDC**  
Full Digital Calibration

**Internal Calibration**  
CAL

**0.01**  
mg

**RS-232C**

**LAN**

**GLP**

**under hook**

**ON**

**WinCT**

**AAI**  
Automatic Counting Accuracy Improvement

**ID**

**Memory**

**✓**



- Wide weighing range for 0.01 mg resolution, 101g for GH252, 51g for HR202i
- One-Touch Automatic Calibration by motor-driven internal calibration mass (GH only)
- Automatic Self Calibration when the ambient temperature changes (GH only)
- Standard RS-232C interface for printer, PC or other peripherals
- GLP, GMP and ISO compliant
- Data memory function (GH only)
- ID number for GLP output
- Auto Power ON function
- Large weighing chamber of 183mm(W) x 148.5mm(D) x 251mm(H)
- WinCT CD-ROM included

Model	Capacity	Resolution	Pan Size
GH-252	250g / 101g	0.1 / 0.01 mg	Ø 90mm
GH-202	220g / 51g	0.1 / 0.01 mg	
GH-300	320g	0.1mg	
GH-200	220g	0.1mg	
GH-120	120g	0.1mg	
HR-202i	220g / 51g	0.1 / 0.01 mg	
HR-300i	320g	0.1mg	

# GR Series

## Semi-Micro/ Analytical Balances

888  
LCD Display

FDC  
Full Digital Calibration

Internal Calibration  
CAL

0.01  
mg

RS-232C

GLP

under  
hook

SPLASH

WinCT

AAAI  
Automatic Counting  
Accuracy Improvement

ID

⊘



- One-Touch, Fully Automatic Self-Calibration
- Easy Access Door
- Splash Proof Keyboard and Display
- Advanced Stabilization Software
- Automatic Adjustable Environment Setting
- Multiple Weighing Units
- GLP Compliant
- Standard RS-232C communication with PC
- Underhook as standard
- WinCT CD-ROM included

Model	Capacity	Resolution	Pan Size
GR-202	210g / 42g	0.1 / 0.01mg	Ø 85mm
GR-120	120g	0.1mg	
GR-200	210g	0.1mg	
GR-300	310g	0.1mg	

# HR Series

## Analytical Balances

888  
LCD Display

FDC  
Full Digital Calibration

RS-232C

CURRENT LOOP

GLP

under  
hook

SPLASH

ON

AAAI  
Automatic Counting  
Accuracy Improvement

ID

Memory

⊘



- Full Digital Calibration
- GLP compliant
- Percentage and Counting Functions
- Digital Preset Tare
- Last Digit Suppression
- One Touch Printing
- Underhook Weighing, Security Rings, External Re-Zeroing Connector
- Optional RS-232C, Current Loop
- Optional Internal Rechargeable Battery Pack

Model	Capacity	Resolution	Pan Size
HR-60	60g	0.1mg	Ø 85mm
HR-120	120g	0.1mg	
HR-200	210g	0.1mg	

# GX/GF Series

## Multi-functional Precision Balances

**SHS**  
Super Hybrid Sensor

**888**  
VFD Display

**FDC**  
Full Digital Calibration

**Internal Calibration**  
CAL

**ANIMAL**

**RS-232C**

**GLP**

**under hook**

**IP54**

**WinCT**

**COMPARATOR**

**AAI**  
Automatic Counting  
Accuracy Improvement

**Scissors icon**



- Our Super Hybrid Sensor (SHS) offers you the ultimate in response speed - Just ONE Second !
- Resolution Ranges : 1/61,000 to 1/1,100,000
- Internal Calibration and Internal Calibration Mass makes calibrating your GX Balance easy when you relocate or bump your balance. Simply push one button !
- Automatic Self-Calibration calibrates the balance when it detects changes in the ambient temperature (GX only)
- Large, bright Vacuum Fluorescent Display for easy-to-see results
- Percentage, Counting Functions & Comparator functions
- ACAI Counting Function for highly accurate counting
- GLP, GMP and ISO compliant
- WinCT CD-ROM included

Model	Capacity	Resolution	Pan Size
GX-200 / GF-200	210g	0.001g	128 x 128 mm
GF-300	310g	0.001g	
GX-400 / GF-400	410g	0.001g	
GX-600 / GF-600	610g	0.001g	
GX-800 / GF-800	810g	0.001g	
GX-1000 / GF-1000	1100g	0.001g	
GF-1200	1210g	0.01g	165 x 165 mm
GX-2000 / GF-2000	2100g	0.01g	
GF-3000	3100g	0.01g	
GX-4000 / GF-4000	4100g	0.01g	
GX-6100 / GF-6100	6100g	0.01g	
GX-6000 / GF-6000	6100g	0.1g	
GX-8000 / GF-8000	8100g	0.1g	



# FX-i Series

## Precision Balances



FX-300i



FX-3000i

- Compact SHS (Super Hybrid Sensor) - 1 second stabilization
- B5 size footprint for installation and use in narrow spaces
- VFD - Vacuum fluorescent display for easy to read weighing results
- SCF - Statistical calculation function
- Quick USB interface with no driver installation (FXi-02)
- LAN - Ethernet interface with WinCT-Plus software (FXi-08)
- Built-in Rechargeable Battery (FXi-09)
- RS-232C interface as standard

Model	Capacity	Resolution	Pan Size
FX-120i	122g	0.001g	Ø 130 mm
FX-200i	220g	0.001g	
FX-300i	320g	0.001g	
FX-1200i	1220g	0.01g	Ø 150 mm
FX-2000i	2200g	0.01g	
FX-3000i	3200g	0.01g	

# GX-K/GF-K Series

## Precision Industrial Balances

**SHS**  
Super Hybrid Sensor

**888**  
VFD Display

**FDC**  
Full Digital Calibration

**Internal Calibration**  
CAL

**SMART RANGE**

**ANIMAL**

**RS-232C**

**GLP**

**under hook**

**IP65**

**ON**

**OFF**

**WinCT**

**COMPARATOR**

**ACA**  
Automatic Counting Accuracy Improvement

**ID**

**Memory**



**GX-K**



**GF-K**



- Ultra-fast response speed with Super Hybrid Sensor (SHS) – Just 1.5 seconds
- One-Touch Automatic Calibration with motor-driven internal calibration mass (GX-K only)
- Automatic Self Calibration when the ambient temperature changes (GX-K only)
- Water and Dust Proof – IP65
- RS-232C interface as standard
- GLP, GMP, GCP and ISO compliant
- ID number for GLP output
- WinCT CD-ROM included
- Counting function with Automatic Counting Accuracy Improvement (ACA)
- Auto Power ON function
- Display Auto Power OFF function
- Data memory function
- Smart Range function (GX/GF-8K2 / 32K only)

Model	Capacity	Resolution	Pan Size
GX-8K / GF-8K	8.1kg	0.01g	270 x 210 mm
GX-8K2* / GF-8K2*	8.1 / 2.1kg	0.1 / 0.01g	
GX-10K / GF-10K	10.1kg	0.01g	
GX-12K / GF-12K	12kg	0.1g	
GX-20K / GF-20K	21kg	0.1g	
GX-30K / GF-30K	31kg	0.1g	
GX-32K* / GF-32K*	31kg / 6.1kg	1g / 0.1g	

\* SmartRange Function

# GP Series

## Industrial Balances

**SHS**  
Super Hybrid Sensor

**VFD**  
VFD Display

**FDC**  
Full Digital Calibration

**Internal Calibration**  
CAL

**SMART RANGE**

**ANIMAL**

**RS-232C**

**GLP**

**under hook**

**DDU**

**IP65**

**OFF**

**WinCT**

**COMPARATOR**

**AAI**  
Automatic Counting Accuracy Improvement

**Memory**

**⊘**



- Swing arm design or separate meterhead and platform design
- Easy calibration with internal calibration mass
- SHS response speed of only 1.5 seconds
- Rugged aluminum alloy & stainless steel construction
- GLP, GMP and ISO compliant
- RS-232C, comparator output (3 levels), analog output
- Large blue Vacuum Fluorescent Display
- Data memory function
- Counting function with ACAI (Automatic Counting Accuracy Improvement)
- Smart Range function (GP-32K / - 102K)
- GP-S for detached display unit (GP-30KS/GP-32KS/GP-60KS/GP-61KS/GP-100KS)
- Waterproof Keyboard Display and Base Unit - IP65
- Comparator function

Model	Capacity	Resolution	Pan Size
GP-12K	12kg	0.1g	384 x 344 mm
GP-20K	21kg	0.1g	
GP-32K*/GP-32KS	31kg / 6.1kg	1g / 0.1g	
GP-30K / 30KS**	31kg	0.1g	
GP-40K	41kg	0.5g	
GP-60K / GP-60KS	61kg	1g	
GP-61K / GP-61KS	61kg	0.1g	386 x 346 mm
GP-100K / 100KS**	101kg	1g	
GP-102K*	101kg / 61kg	10g / 1g	

\*SmartRange Function \*\*GP-KS means GP with a detached display unit

# EK-i/EW-i Series

Compact/Personal Balances



- Compact and lightweight
- Large wide LCD display with backlight
- High Resolution up to 1/60,000
- Standard RS-232C communication with PC
- 9 Multi-Weighing Units with user priority start-up
- Counting Function with ACAI
- Standard Comparator Function
- Full Digital Calibration with optional user definable mass setting
- Optional Rechargeable Battery Pack
- Overload Protection
- GLP Compliance
- Triple range weighing (EW-I)

Model	Capacity	Resolution	Pan Size
EK-120i	120g	0.01g	Ø 110mm
EK-200i	200g	0.01g	
EK-300i	300g	0.01g	
EK-410i	400g	0.01g	
EK-610i	600g	0.01g	
EK-600i	600g	0.1g	133x170mm
EK-1200i	1200g	0.1g	
EK-2000i	2000g	0.1g	
EK-3000i	3000g	0.1g	
EK-4100i	4000g	0.1g	
EK-6100i	6000g	0.1g	
EK-6000i	6000g	1g	
EK-12Ki	12kg	1g	

Model	Capacity	Resolution	Pan Size
EW-150i	30g	0.01g	Ø 110mm
	60g	0.02g	
EW-1500i	150g	0.05g	133x170mm
	300g	0.1g	
	600g	0.2g	
EW-12Ki	1500g	0.5g	133x170mm
	3000g	1g	
	6000g	2g	
	12000g	5g	

# AD-4212A

## Production Weighing System



*If you want to build a new production line or just upgrade your old system, you should take a look at our AD-4212A Precision Weighing Sensor !*

- High resolution and Fast response speed of 0.8 seconds
- RS-232C interface as standard
- Re-Zero operation via standard external contact input
- HI, OK or LO indicator with buzzer and relay output
- Data memory function
- IP54 compliant
- GLP/GMP output
- Windows Communication Tools (WinCT) comes as standard
- Multi-weighing units: g, mg, OZ, Lb, LOZ, Ozt, ct, mom, dwt, GN, TL, t, MS and PC (counting) and Pct (percent)
- Auto-display OFF and Auto Power ON functions
- A stainless steel breeze break is provided for the AD-4212A-100
- Clear VFD display
- Quick reference card provided
- 2-meter long connection cable between weighing sensor unit and display unit
- LAN - Ethernet interface with WinCT-Plus software (AD4212A-08)

Model	Capacity	Resolution	Pan Size
AD-4212A-100	110g	0.0001g	50 x 50 mm
AD-4212A-200	210g	0.001g	
AD-4212A-600	610g	0.001g	70 x 70 mm
AD-4212A-1000	1000g	0.001g	

# AD-8526

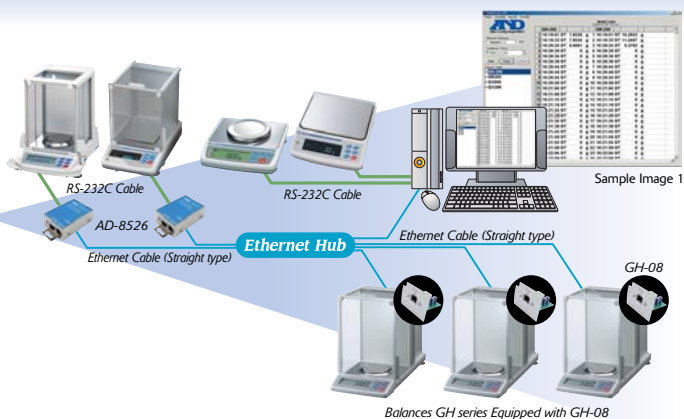
RS/ Ethernet Converter



- RS-232C output signal can be converted to Ethernet
- Available to use with all A&D Balances and weighing instruments equipped with RS-232C

# WinCT-Plus

Windows Communication Tools



- Software for multi data acquisition from multiple weighing instruments
- Ethernet network and RS-232C connection can be used simultaneously
- Weighing instruments can be controlled by sending commands from a PC
- Acquired weighing data can be formatted in Microsoft EXCEL



# AD-8121B

## Multi-Function Printer



- Dot Matrix Impact Printer
- Multiple Weighing & Statistical Functions
- Battery or AC Adapter Operation

# AD-1682

## Rechargeable Battery Unit



- Compatible products: GH, GR, HR, GX,GF, GP, EK-i, EW-i, FC-i/Si, HC-i, HD and FX-i

Battery Weight	Approx. 1.1 kg
Battery Life	4-50 hours depending on operating conditions and connected devices
Dimensions	57 (H) x 96 (W) x 124 (D) mm
Battery Type	Nickel-metal-hydride (Ni-MH) battery

# AD-1683

## Static Eliminator



- The AD-1683 generates positive and negative ions to eliminate static electricity.

# AD-8920

## Remote Display



- Bright VFD display (13mm) to connect to either RS-232C or Current Loop interface

# AD-8922

## Remote controller



- The AD-8922 is a remote controller that can be connected to certain A&D weighing instruments in order to display weighing data and control the weighing instrument using a keypad.

# FC-i/FC-Si Series

Counting Scales



- Internal resolution 1/10,000,000 (FC-Si) 1/1,000,000 (FC-i)
- Displayed resolution FC-Si 1/25,000 FC-i 1/10,000
- FC-Si SHS sensor assures accuracy and resolution of precision balance.
- Automatic Counting Accuracy Improvement (ACA)
- Large memory stores & retrieves up to 500 ID, unit & tare weights and Item Codes (Alphanumeric)
- Navigation System with LED increases ease & efficiency
- Accumulation Function Mode totals piece count into memory
- Remote platform option offers bulk counting
- Universal Flex Coms (UFC) allows you to print out as you format the printer
- Comparator function which triggers a buzzer (HI, OK or LO settings)
- Buzzer function
- Optional rechargeable battery pack (Ni-MH)



**Bar Code Reader (option)**

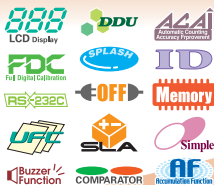


**AD-8125  
Bar Code Label Printer**

Model	Min. Unit Weight (Nomal Mode)	Min. Unit Weight (Fine Mode)	Capacity	Display Resolution	Pan Size (W x D)
FC-500Si	0.001g	0.00005g	500g	0.02g	128 x 128mm
FC-5000Si	0.01g	0.0005g	5kg	0.2g	165 x 165mm
FC-500i	0.01g	0.0005g	500g	0.05g	205 x 152mm
FC-1000i	0.02g	0.001g	1kg	0.1g	
FC-2000i	0.04g	0.002g	2kg	0.2g	300 x 280mm
FC-5000i	0.1g	0.005g	5kg	0.5g	
FC-10Ki	0.2g	0.01g	10kg	1g	
FC-20Ki	0.4g	0.02g	20kg	2g	
FC-50Ki	1g	0.05g	50kg	5g	

# HC-i Series

## Counting Scales



- High internal resolution  
1/600,000 or 1/750,000
- AWA - Audible Weighing Assist beeping function
- Unit weight entry navigator
- ACAI - Automatic counting accuracy improvement
- DDU - Detachable display unit
- SLA - Sealed lead acid rechargeable battery (6V,4Ah)
- Comparator function to display HI, OK or LO results
- Accumulation function for total piece calculation

Model	Min. Unit Weight (Normal Mode)	Min. Unit Weight (Fine Mode)	Capacity	Display Resolution	Pan Size (WxD)
HC-3Ki	0.1g	0.005g	3kg	0.0005kg	300 x 210mm
HC-6Ki	0.2g	0.01g	6kg	0.001kg	
HC-15Ki	0.4g	0.02g	15kg	0.002kg	
HC-30Ki	1g	0.05g	30kg	0.005kg	

# HD Series

## Counting Scales



- Automatic Counting Accuracy Improvement (ACAI) Function recalculates average unit weight with each new sample
- Choice of Simple Operation (HD-A) or 10 Keypad (HD-B)
- Weighing Capability: Lbs or Kg, Counting and/or Comparator
- AC Adapter/Dry Cell Battery (Optional Rechargeable Battery)
- Auto Power Off
- Large Platform
- Detachable Indicator & Keyboard
- Key Lock-out Mode
- M + Memory Totaling Mode
- Standard Comparator Function

Model	Capacity	Resolution	Pan Size (WxD)
HD-12A/B	12Kg	2g	300 x 380mm
HD-30A/B	30Kg	5g	
HD-60A/B	60Kg	10g	

# HV-G/HW-G Series Platform Scales

Triple Range Up to 1/12,000 High Resolution

888 VFD Display

888 LCD Display

FDC Full Digital Calibration

RI-2-3 Triple Range

RS-232C

Buzzer Function

SPLASH

IP65

OFF

COMPARATOR

COMPARATOR

%

AF Recommendation Function



- Large and Clear Display  
LCD : HV-GL and HW-GL  
VFD : HV-GV, HW-GV  
Digit height: LCD 25 mm/VFD 20 mm
- Optional Dot Matrix Printer  
(for HV/HW-GV models only)
- IP65 / NEMA4 compliant
- Comparator Function
- Comparator Buzzer with OP-03
- Setpoint Control for Simple Batching
- Tilting Meter Head
- Standard Bi-Directional RS-232C
- Counting and % Function
- M + Function for totaling Weighing Data

**Printer** < Dot Impact Printer >  
Print out your data for safe keeping.  
(Option only for VFD Type)



## Water and Dust Resistant

The stainless steel weighing pan is easy to clean and is resistant to both water and dust (IP65).

Model	Capacity	Resolution	Display		Pan Size	Power
			LCD	VFD		
HV-15KGL	3/6/15kg	1/2/5g	★		250 x 250mm	AC adapter/6DD
HV-15KGV				★		AC
HV-60KGL	15/30/60kg	5/10/20g	★		330x424mm	AC adapter/6DD
HV-60KGV				★		AC
HV-200KGL	60/150/220kg	20/50/100g	★		390x530mm	AC adapter/6DD
HV-200KGV				★		AC
HW-10KGL	10kg	1g	★		250x250mm	AC adapter/6DD
HW-10KGV				★		AC
HW-60KGL	60kg	5g	★		330x424mm	AC adapter/6DD
HW-60KGV				★		AC
HW-100KGL	100kg	10g	★		390x530mm	AC adapter/6DD
HW-100KGV				★		AC
HW-200KGL	220kg	20g	★		390x530mm	AC adapter/6DD
HW-200KGV				★		AC

# Platform Scales Series

## HV-WP/HW-WP

Triple Range

Up to 1/12,000 High Resolution

888  
VFD Display

FDC  
Full Digital Calibration

RI-2-3  
Triple Range

RS-232C

Buzzer Function

IP65

OFF

COMPARATOR

%

AF  
Accumulation Function



Stainless Steel  
Meter Heads!

- Large and Clear Display VFD
- Digit height: 20 mm
- IP65 / NEMA4 compliant
- Comparator Function
- Comparator Buzzer with OP-03
- Setpoint Control for Simple Batching
- Tilting Meter Head
- Stainless Steel Meter heads
- Standard Bi-Directional RS-232C
- Counting and % Function
- M+ Function for Totaling Weighing Data

### Dustproof & Waterproof

- IP65
- Display and pan are protected from dust and other fine particles
- Washable
- Load Cell Sensor Protection



Model	Capacity	Resolution	Display	Pan Size	Power
HV-15KV-WP	3/6/15 kg	1/2/5 g	VFD	250x250mm	AC
HV-60KV-WP	15/30/60 kg	5/10/20 g		330x424mm	
HV-200KV-WP	60/150/220 kg	20/50/100 g		390x530mm	
HW-10KV-WP	10kg	1g		250x250mm	
HW-60KV-WP	60kg	5g		330x424mm	
HW-100KV-WP	100kg	10g		390x530mm	
HW-200KV-WP	220kg	20g		390x530mm	

# FG Series

## Bench and Platform Scales



LCD Display



Full Digital Calibration



Three weighing resolution



RS-232C



OFF



COMPARATOR



FG-150KAL

FG-30KAM

FG-60KBM

- Fast weighing response – Just 1 second !
- Three selectable weighing resolutions using function settings
- Counting function
- Comparator function
- Calibration function
- Auto-Power OFF function
- Two types of power supply – Dry Batteries or AC adapter
- Low power supply indication function
- Filtering function
- Display column and Tilt display pod (FG-KA only)
- Gravity acceleration correction function
- Optional RS-232C and Comparator Output function (FG-23 / FG-24)

Model	Capacity	Resolution			Pan Size (WxD)
FG-30KAM	30kg	0.01kg	0.005kg*	0.002kg	300 x 380 mm
FG-60KAM	60kg	0.02kg	0.01kg*	0.005kg	
FG-150KAM	150kg	0.05kg	0.02kg*	0.01kg	
FG-30KBM	30kg	0.01kg	0.005kg*	0.002kg	
FG-60KBM	60kg	0.02kg	0.01kg*	0.005kg	
FG-150KBM	150kg	0.05kg	0.02kg*	0.01kg	
FG-60KAL	60kg	0.02kg	0.01kg*	0.005kg	390 x 530 mm
FG-150KAL	150kg	0.05kg	0.02kg*	0.01kg	

\*The factory setting for Weighing Resolution



# FS-i Series

## Waterproof Checkweighing Scales



FS-30Ki

- Ultra fast weighing response - just 0.5 seconds
- IP65 Dustproof and Waterproof
- Comparator function with LO, OK or HI light and buzzer
- ASD - Analog sweep display
- Three weighing resolutions
- SLA - Sealed lead acid rechargeable battery (6V,4Ah)
- Large LCD display with backlight function

Model	Capacity	Resolution			Pan Size (WxD)
FS-6Ki	6kg	0.002kg*	0.001kg	0.0005kg	250 x 250 mm
FS-15Ki	15kg	0.005kg*	0.002kg	0.001kg	
FS-30Ki	30kg	0.01kg*	0.005kg	0.002kg	380 x 300 mm

\*The factory setting for weighing resolution

# SK-WP Series

## Dust & Waterproof Digital Scales



- Washable (Dust & Waterproof, IP65)
- Stainless Steel Body and Weighing Pan
- Large & Clear LCD Display (25mm)
- 1/2000 Resolution (SK-5001WP : 1/5000)
- Designed to meet Weight & Measurement Regulations
- Portable (6D Type Batteries, Batteries not included)
- Net Weight / Stability Indication
- Low Battery Indication
- Separate Keys for Power and Re-zero
- Auto Power Off
- AC Adapter (Option)

Model	Capacity	Resolution	Pan Size
SK-1000WP	1000g	0.5g	232 x 192 mm
SK-2000WP	2000g	1g	
SK-5000WP	5000g	2g	
SK-5001WP	5000g	1g	
SK-10KWP	10Kg	5g	
SK-20KWP	20Kg	10g	

# SJ Series

## Digital Scales

888  
LCD Display



FDC  
Full Digital Calibration



SPLASH



- Stainless steel weighing pan (SJ-HS)
- Large easy-to-read wide LCD
- Fast stability time - less than 1 second
- Multiple weighing units - g, lb, oz, and lb-oz
- Spirit level and adjustable feet for more accurate weighing
- 4 x D size battery compartment at rear

Model	Capacity	Resolution	Pan Size
SJ-1000H/HS	1000g	0.5g	230x190mm
SJ-2000H/HS	2000g	1g	
SJ-5000H/HS	5000g	2g	
SJ-12KH/HS	12kg	0.005kg	

# SK Series

## Digital Scales

888  
LCD Display



FDC  
Full Digital Calibration

SPLASH



SK-2000D



SK-2000D Rear View

- Large easy-to-read wide LCD
- Dual Front and Rear Displays on SK-D Series
- Digital Calibration for easy calibration
- Portable Operation with 6 D-Type Batteries
- Auto Power Off
- Optional Stainless Steel Weighing Pan

Model	Capacity	Resolution	Pan Size
SK-1000 / (D)	1000g	0.5g	230 x 190mm
SK-2000 / (D)	2000g	1g	
SK-5000 / (D)	5000g	2g	
SK-5001	5000g	1g	
SK-10K / (D)	10kg	5g	
SK-20K / (D)	20kg	10g	
SK-30K / (D)	30kg	20g	

# HL Series

## Compact Scales

888  
LCD Display

FDC  
Full Digital Calibration

SPLASH

AA



HL-100



HL-400

- Wide easy-to-read LCD
- Low profile & small footprint
- Portable Operation using 6 AA batteries
- Auto Power Off preserves battery life
- Made from High Impact Plastic
- Detachable Stainless steel Weighing pan (HL-100)
- Standard Carrying Case (HL-100)
- Optional Stainless Steel Weighing Pan (HL-400 / 4000)

Model	Capacity	Resolution	Pan Size
HL-100	100g	0.01g	Ø70mm
	3.5oz	0.0005oz	
	500ct	0.05ct	
HL-400	400g	0.1g	136x136mm
HL-4000	4000g	1g	

# HL-WP Series *Dust & Waterproof Digital Scales*

888  
LCD Display

IP65

FDC  
Full Digital Calibration



AA



- Washable (Dust & Waterproof, IP65)
- Small footprint
- High Resolution (1/3000)
- Portable  
(6 AA-Type Batteries, Batteries not included)
- Auto Power Off
- AC Adapter (Option)

Model	Capacity	Resolution	Pan Size
HL-300WP	300g	0.1g	128x128mm
HL-1000WP	1000g	0.5g	
HL-3000WP	3000g	1g	
HL-3000LWP	3000g	1g	174x137mm

# HL-i Series

*Compact Scales*

888  
LCD Display

AA

FDC  
Full Digital Calibration



- Nin\*JA -  
New Innovative Novel Japanese Apparatus
- High weighing resolution of 1/2000
- Large LCD display
- Calibration function
- Tare function
- Auto Power OFF function
- Low battery indication function
- Multi weighing units
- Batteries included

**Nin\*JA**

Model	Capacity	Resolution	Pan Size
HL-200i	200g	0.1g	Ø130mm
HL-2000i	2000g	1g	

# HJ-150 Series

*Compact Scale*

888  
LCD Back Light

FDC  
Full Digital Calibration



- Selectable weighing unit – g or oz
- Tare function
- LCD display with blue color backlight
- Calibration function with Standard calibration mass (100g)



Model	Capacity	Resolution	Pan Size
HJ-150	150g	0.1g	60x64mm



*...Clearly a Better Value*

## **A&D Company, Limited**

3-23-14 Higashi-Ikebukuro, Toshima-ku, Tokyo 170-0013 JAPAN  
Telephone:[81](3) 5391-6132 Fax:[81](3) 5391-6148  
<http://www.aandd.jp>

## **A&D ENGINEERING, INC.**

1555 McCandless Drive, Milpitas, CA. 95035 U.S.A.  
Telephone:[1](408) 263-5333 Fax:[1](408) 263-0119  
<http://www.andweighing.com>

## **A&D MERCURY PTY. LTD.**

32 Dew Street, Thebarton, South Australia 5031 AUSTRALIA  
Telephone:[61](8) 8301-8100 Fax:[61](8) 8352-7409  
<http://www.andmercury.com.au>

## **A&D INSTRUMENTS LTD.**

Unit 24/26 Blacklands Way Abingdon Business Park,  
Abingdon, Oxon OX14 1DY United Kingdom  
Telephone:[44](1235) 550420 Fax:[44](1235) 550485  
<http://www.aandd.net>

## **<German Sales Office>**

Große Straße 13 b 22926 Ahrensburg GERMANY  
Telephone:[49](0) 4102 459230 Fax:[49](0) 4102 459231  
[http://www.aandd.net/balance\\_ger/index.php](http://www.aandd.net/balance_ger/index.php)

## **A&D KOREA Limited**

Manhattan Bldg. 8F, 36-2 Yoido-dong, Youngdeungpo-gu, Seoul, KOREA  
Telephone:[82](2) 780-4101 Fax:[82](2) 782-4280  
<http://www.andk.co.kr>

## **A&D RUS CO., LTD.**

Korp.134A, D.29, UL. Vereiskaya, Moscow, 121357 RUSSIAN FEDERATION  
Telephone: [7] (495) 727-4455 Fax: [7] (495) 727-4456