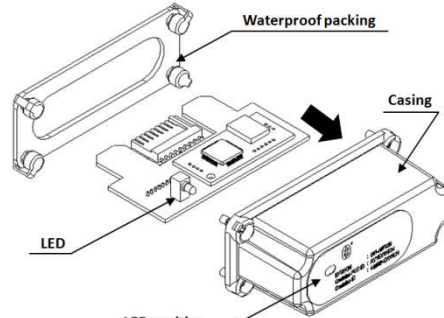


SCE-27 is a wireless communication option. Attach to the SC/SE series scale.

1. Installation Procedure

- Note: Before installing the SCE-27 option board, be sure to remove the batteries from the scale.
- Step1 Hold the board in such a way that its LED will match the hole on the casing. Insert the board into the casing by sliding it into the casing groove.
- Step2 Place the waterproof packing on the casing, aligning its holes with the casing screw holes.
- Step3 Remove the four screws on the option slot panel located on the bottom right of the display.
- Step4 Connect the option board to the connector on the display unit.
- Step5 Secure the casing to the display, using the four screws provided with the casing.
- Step6 Seal the screw heads with the tabs attached to the waterproof packing.



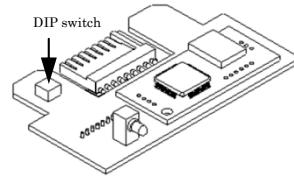
2. Connectable device

- AD8931 :Wireless Remote Display
- AD8541-PC :Wireless Communication Interface for PC (Connect to USB port of computer)

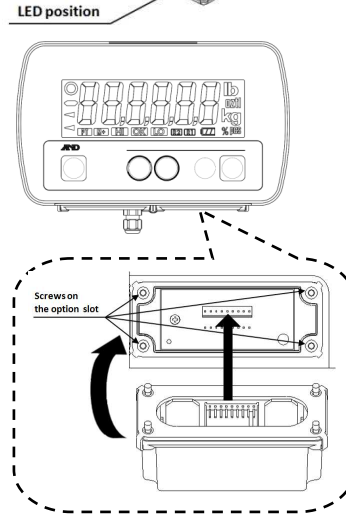
Note1 Refer to the A&D website for details.

- Smartphone / Tablet / PC with Bluetooth :Refer to 5- HID function.

Note2 Turn off DIP switch No.1. Refer to 3- DIP switch.



3. DIP switch



| Case | DIP switch | | Output Data |
|---|------------|--------|--|
| | No.1 | No.2 | |
| | SELECT | SERIAL | |
| 1 Two-way communication (Factory Setting) | OFF | OFF | Connect to AD8931 or AD8541-PC |
| | | | |
| 2 Keyboard input | ON | OFF | Only numerical data (No header, no +sign and no unit) Example 1) 1.23 Example 2) -4.56 ↑ Data |
| | | | |

4. Setting the scale (SC/SE series)

Refer to the instruction manual of the scale (SC/SE series), to set the functions.

- Set function "bP5" to "0".
- Set function "P-t" to "0". (In case of connection to AD8931)

5. HID function (HID Over GATT Profile)

- By turning on DIP switch No.1, you can connect to a Smartphone, tablet, or PC with Bluetooth and use a general-purpose text application or spreadsheet software.
- The output data has no header (ST, WT, etc.), + sign and unit (g, kg, etc.).
- Set the keyboard language of device to English.

Pairing

- Turn on the Bluetooth function of connection device and power on the scale. Select the "A&D_HID" device and pair. S/N may have been added after "A&D_HID".
- You will not be able to connect if more than 30 seconds have passed without pairing after selecting the device. In that case, power off the scale and try again.

6. Precautions for use

- Refer to the instruction manual of the connection device for the pairing.
- The LED lights up when the wireless communication connection is completed.
- It will connect automatically when the paired device is nearby. When connecting to other device, turn off the unused devices or disconnect.
- If you can't communicate, check that the connector is firmly connected. If it still fails, check the scale settings, pairing and connected devices.

7. Wireless communication

- Bluetooth devices is EYSHCNZXX (TAIYO YUDEN CO.,LTD.)/Bluetooth 5.0 (Bluetooth Low Energy)
- The effective range communication is 10 m or less in an unobstructed space. If there is an obstacle such as a wall, the range of communication will be shorter.
- Interference may be caused near the following devices that use the 2.4 GHz frequency band, which is the same as for Bluetooth. Therefore, this device is not suited for uses that require reliability.
 - Wireless LAN
 - Bluetooth devices (such as mobile phones)
 - Home appliances such as microwave ovens

8. Compliance

8-1. Compliance with FCC Rules

This device contains transmitter module FCC ID : RYYEYSHCN

This device complies with Part 15 of the FCC rules. Operation is subject to the following two conditions :

(1) this device may not cause harmful interference, and (2) this device must accept any interference received, including interference that may cause undesired operation. (FCC = Federal Communications Commission in the U.S.A.)

FCC warning

Changes or modification not expressly approved by the party responsible for compliance could void the user's authority to operate the equipment.

Note : This equipment has been tested and found to comply with the limits for a class A digital device, pursuant to part 15 of the FCC rules. These limits are designed to provide reasonable protection against harmful interference when the equipment is operated in a commercial environment. This equipment generates, uses, and can radiate radio frequency energy and, if not installed and used in accordance with the instruction manual, may cause harmful interference to radio communications. Operation of this equipment in a residential area is likely to cause harmful interference in which case the user will be required to correct the interference at his / her own expense.

8-2. IC

IC RADIATION EXPOSURE STATEMENT FOR CANADA

This device complies with Industry Canada license-exempt RSS standards. Operation is subject to the following two conditions : (1) this device may not cause interference, and (2) this device must accept any interference, including interference that may cause undesired operation of the device.

This device contains transmitter module IC : 4389B-EYSHCN